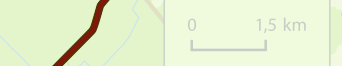


LEGEND

- Information stands
- Catering services
- Railroad station
- Fishing is prohibited
- Kayaks
- Bus station
- Fuel filling station
- First-aid post
- Beautiful landscapes
- Scenic viewpoint
- Viewing tower
- Museum, exposition
- Park management
- Tourism information
- District municipality
- Farmsteads for village tourism
- Cemetery
- Alka Mountain (Mountain of idols)
- Monument
- Catholic church
- Holiday cabins
- Guest houses
- Camping
- Skiing
- Camping place
- Horseback riding
- Police
- Hotel
- Beach
- Mound
- Stone
- Park
- Brook

- Border of Samogitian National Park
- Road to Cold War Exposition
- The road to the Memorial Museum of the writer Žemaitė in Bukantė



MAP OF PLUNGĖ DISTRICT

Pedestrian and bicycle paths

- Šeirė walking trail (4.1 km)
- Giliukas and Kaštoniukas walking trail (1 km)
- Plokštinė walking trail (3 km)
- Paplatelė walking trail (2.3 km)
- Mikytai walking trail (1 km)
- Gardai esker walking trail (1 km)
- Gėgrėnai hillfort trail (1,6 km)
- Liepijos walking trail (4 km)
- Bicycle path around Plateliai Lake (24 km)
- Walking and cycling trails around Ilgis Lake (16.6 km)

Water equipment, bike rental. Diving and other services.

- Kayaks, canoes, rafts, sup-boards “Zemėsdis” Kulių g. 34, Beržoro k., Plungės r. Tel. No.: +370 620 26033 poisis@zemsodis.lt www.zemsodis.lt
- Boat, pedal boats rental “Linėlis” Plokštinės g. 3, Paplatelės k., Plungės r. Tel. No.: +370 655 77666 info@linelis.lt www.linelis.lt
- Rental of boats, pedal boats, yachts, catamarans, kayaks, windsurf boards Yacht club on Plateliai Lake Ezero g. 40, Plateliai, Plungės r. Tel. No. +370 627 50861 www.plateliai.lt
- Rental of transparent boats Plateliai, Plungės r. Tel. No. +370 615 55085 plaukiam@skaidriosvalty.lt www.skaidriosvalty.lt
- Boat, water bike rental Sigitas Birškus Plungės g. 5, Beržoro k., Plungės r. Tel. No.: +370 647 01000, +370 611 27794 +370 611 27794
- Rental of yachts and bikes Villa RUNA Ezero g. 37, Plateliai, Plungės r. Tel. No. +370 655 43909 poisisplateliuose@gmail.com www.poisisplateliuose.lt
- Rental of catamaran, tennis courts Village Tourism Enterprise “Prie žiedelio” Plungės g. 1, Laumalenkų k., Plungės r. Tel. No.: +370 696 52752, +370 686 09867 info@priezedelio.lt www.priezedelio.lt
- Tennis courts “Saulės slėnis” Bičių tako g. 3, Paplatelės k., Plungės r. Tel. No. +370 686 01 934 info@sauleslenis.lt www.saullesslenis.lt

- Bike rental Arūnas Raudys Didžioji g. 3, Plateliai, Plungės r. Tel. No. +370 611 80472 dviratisnuomai@gmail.com
- Diving “Oktopusas” Ezero g. 40, Plateliai, Plungės r. Tel. No.: +370 626 23007, +370 698 71108 info@oktopusas.lt www.oktopusas.lt
- Horseback riding Vidmantas Gendvilas Medelyno g. 63, Noriškių k., Plungės r. Tel. No.: +370 448 71169, +370 682 15715 vidmantasgendvilas@yahoo.com
- Horse Farm “Minija” A. Plechavičiaus g. 37, Kalniškių k., Plungės r. Tel. No. +370 684 93060 minijoszirgai@gmail.com
- Canoeing route on Plateliai Lake Tel. No. +370 662 38238 orders@wetweim.com www.wetweim.com

- Horseback riding “Virš ąžuolų” Plokštinės g. 20, Paplatelės k., Plungės r. Tel. No.: +370 698 10 312, +370 614 74284 mgitana@gmail.com www.sodybapaozuolais.lt
- Skiing, tennis courts “Mortos kalnas” Kalniškės k., Plungės r. Tel. No. +370 610 40 905 sauliusplunge@yahoo.com
- Paintball, bubble soccer, archery competitions Tel. No. +370 644 41119 dazasydisplateliuose@gmail.com
- Rental of equipment for Mini Golf Plungės TIC Dariaus ir Girėno g. 27, Plungė Tel. No. +370 640 53644 turizmas@plunge.lt www.visitplunge.lt

1 Memorial Museum of the writer Žemaitė, Bukantė Manor The native house of the writer invites everyone to see the exposition, which reveals her personal life and creations. The barn of the manor features the memorial exposition of Stanislovas Riauba: you will be able to learn about one of the most prominent folk artists of Samogitia and will see his unique creations here. You can see traditional Samogitian sun-crosses, sculptures of saints in the restored barn. The museum also holds educational programs: “Samogitian Culinary Heritage”, “Goose Feather Writing” and others.



2 Gandinga Landscape Reserve In ancient times, Gandinga was an important cultural, administrative and defensive object. In written sources, it was first mentioned in 1253 in documents on the division of the Curonian lands. Archaeological finds indicate that this is the only place in Lithuania, where five mounds at once are located on a small area.



3 Žemaitija (Samogitian in English) National Park The park was founded in 1991 and covers the area of 21,745 ha. Plateliai lake is the deepest and largest, and probably also the most beautiful lake in Samogitian region, with islands, peninsulas and bays. The lake is surrounded by hillsides and forests. A relic fish Coregonus lavaretus holtsatus Thienemann nat. Platelensis lives in the lake. The abundance of mounds, idolatrous hills and shrines reflects the ancient culture. But chapels and crucifixions, found on roadsides and in fields can slightly open the lifestyle and traditions of local residents. These samogitian traditions further emphasize the significance of the Shrove Tuesday (Užgavėnės in Lithuanian) which is still being celebrated.



4 Plateliai The city is mentioned in historical sources from the 15th century. It was located on the Šventorkalnis peninsula, and at the end of the 17th century it was moved to the place where it is located up to now. There is St. Peter and Paul church in the town, Plateliai manor, once owned by a count family Choiseul-Guifier of French origin. The largest ash tree in Lithuania grows in the manor park. In the downtown, there is crucifixion of St. Florian, monuments to the Decade of Independence of Lithuania (1918–1928), the Lithuanian Liberation Army (1941–1944–1953) and the monument to the memory of Balys Korza, martyr of the Rainiai massacre. The city of Plateliai, where Užgavėnės has been celebrated since ancient times, was recognized in 2008 as European Destinations of Excellence (EDEN), largely due to its unique cultural traditions.



5 Litvaks Memorial Garden Here, the outlines of Lithuania are indicated by bushes that bloom all year round, and in places where in 1941–1944 Jewish communities were destroyed are marked with apple trees forged from metal by the craftsman A. Platakas. Apples on the apple trees symbolically perpetuate families living in the communities. The Karelian granite columns are installed in places on the map in which the world famous Litvaks (Jews living in Lithuania were called Litvaks) were born.



6 Leonardas Černiauskas art gallery – creative workshops Leonardas Černiauskas has bought the Water Mill that was built in 1816 and belonged to Count Choiseille. He restored it and founded his own art gallery and workshops in 1989. Now there is a permanent exhibition of his paintings by the artist, wood carvings and antiques.

7 The park of energetic labyrinths and geometric shapes Here you will find five energetic labyrinths of various lengths (from 54 m to 1800 m) and other geometric shapes: domes, mandalas and mekabas.



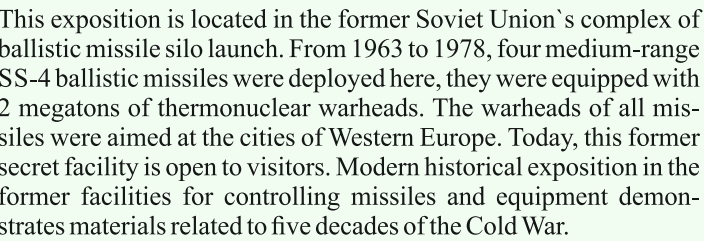
8 Cold War Exposition This exposition is located in the former Soviet Union’s complex of ballistic missile silo launch. From 1963 to 1978, four medium-range SS-4 ballistic missiles were deployed here, they were equipped with 2 megatons of thermonuclear warheads. The warheads of all missiles were aimed at the cities of Western Europe. Today, this former secret facility is open to visitors. Modern historical exposition in the former facilities for controlling missiles and equipment demonstrates materials related to five decades of the Cold War.

9 Expositions of Samogitian National Park and Shrove Tuesday (Užgavėnės in Lithuanian) Exposition of Samogitian National Park includes updated expositions devoted to the history of the Plateliai manor, past events in Plateliai and ethnography of this Samogitian region. There is also an exhibition dedicated to nature, and the exhibitions in the exhibition hall are constantly changed. First in Lithuania exhibition of masks for Užgavėnės is located in the neighboring stable that is built in the second half of the 19th century in the historicist style. This exhibition represents famous and traditional Užgavėnės festival with more than 250 different masks.



10 Visitor Center in Plateliai – exhibition area The exposition “Secrets of the Samogitian Land” is located at Visitor Center. Giliukas – the lead character of exposition invites visitors to take a trip through the Samogitian National Park to discover its secrets.

11 Žemaičių Kalvarija (Samogitian Calvary) According to written sources, the city was first mentioned in 1253 and called Garde (Gardai). First Road to Calvary (Way of the Cross, Golgotha) with 19 chapels was created by bishop Jurgis Tiškevičius in the thirties of the 17th century in Grand Duchy of Lithuania. He also built a church dedicated to St. Mary. Žemaičių Kalvarija is one of the most visited sacred places in Lithuania. It is included in the pilgrimage route of Pope John Paul II.

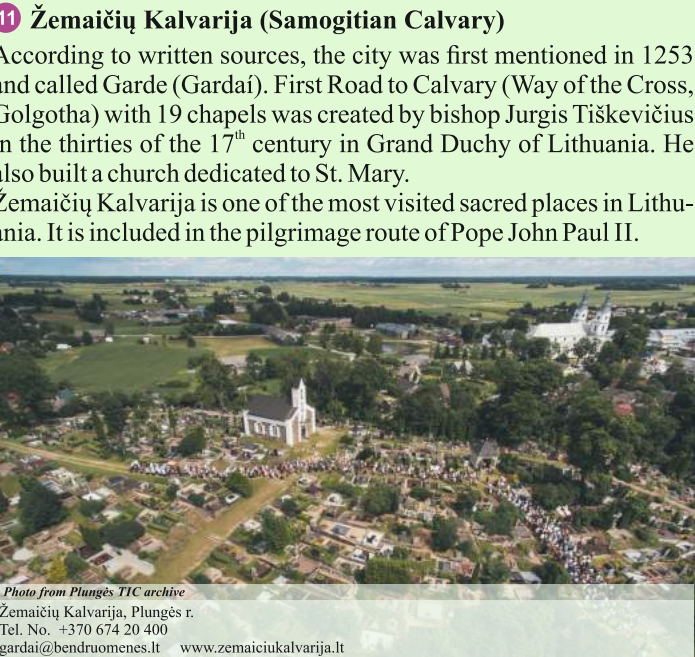
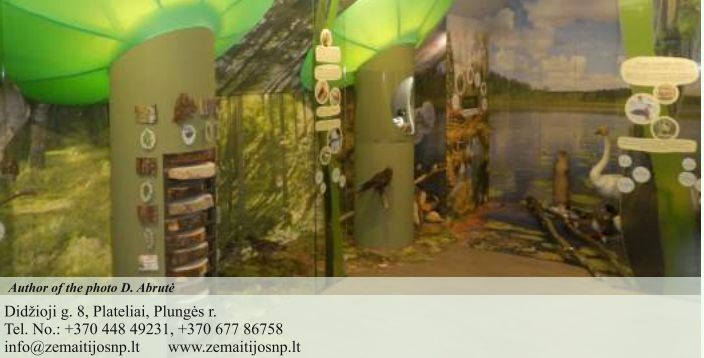
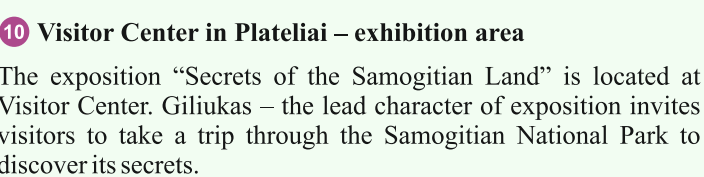


12 Kuliai Museum of Local Lore The exposition of the Kuliai Museum of Local Lore is divided into stands dedicated to the period between the two world wars, the resistance movement, the times of collective farms, medicine, culture, Kuliai after 1990. A separate room allows you to get acquainted with Kuliai book-carriers (knygnešiai) who, in a desperate bid to save their language, transported books across the border and illegally disseminated them throughout Lithuania in attempt to resist the russification. Visitors will get acquainted with city church, old periodicals and newspapers and famous people: S. Kymantaitė-Čiurlionienė, J. Tumas-Vaižgantas.

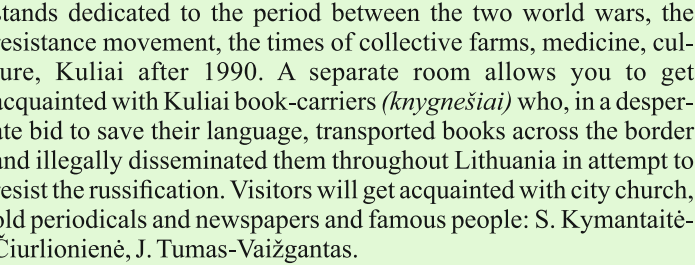
13 Monument to the victims of the Holocaust in Kaušėnai There is a hill near Plungė in the village of Kaušėnai, overgrown with trees, where about 1800 Jews of Plungė were brutally killed and buried on July 15–16, 1941. Jacob Bunka – the last Jew from Plungė together with his friends Lithuanian wood carvers founded the Kaušėnai memorial.



14 Siberija viewing tower From 15-meter-high tower you can see Lakes Plateliai and Beržoras, the Siberian Wetland – one of the most valuable wetlands in Samogitian National Park, the village of Beržoras, the southern part of the town of Plateliai, Liepija forest.



15 Plateliai scenic viewpoint From the viewpoint offers a beautiful view to the famous Lake Plateliai, to its islands (Pilies island, Veršių island), the peninsula of Šventorkalnis and the dark forests of Plokštinė. The scenic viewpoint is adapted for people with mobility and vision disabilities.



16 Plateliai scenic viewpoint From the viewpoint offers a beautiful view to the famous Lake Plateliai, to its islands (Pilies island, Veršių island), the peninsula of Šventorkalnis and the dark forests of Plokštinė. The scenic viewpoint is adapted for people with mobility and vision disabilities.



17 Monument to the victims of the Holocaust in Kaušėnai There is a hill near Plungė in the village of Kaušėnai, overgrown with trees, where about 1800 Jews of Plungė were brutally killed and buried on July 15–16, 1941. Jacob Bunka – the last Jew from Plungė together with his friends Lithuanian wood carvers founded the Kaušėnai memorial.



18 Siberija viewing tower From 15-meter-high tower you can see Lakes Plateliai and Beržoras, the Siberian Wetland – one of the most valuable wetlands in Samogitian National Park, the village of Beržoras, the southern part of the town of Plateliai, Liepija forest.

